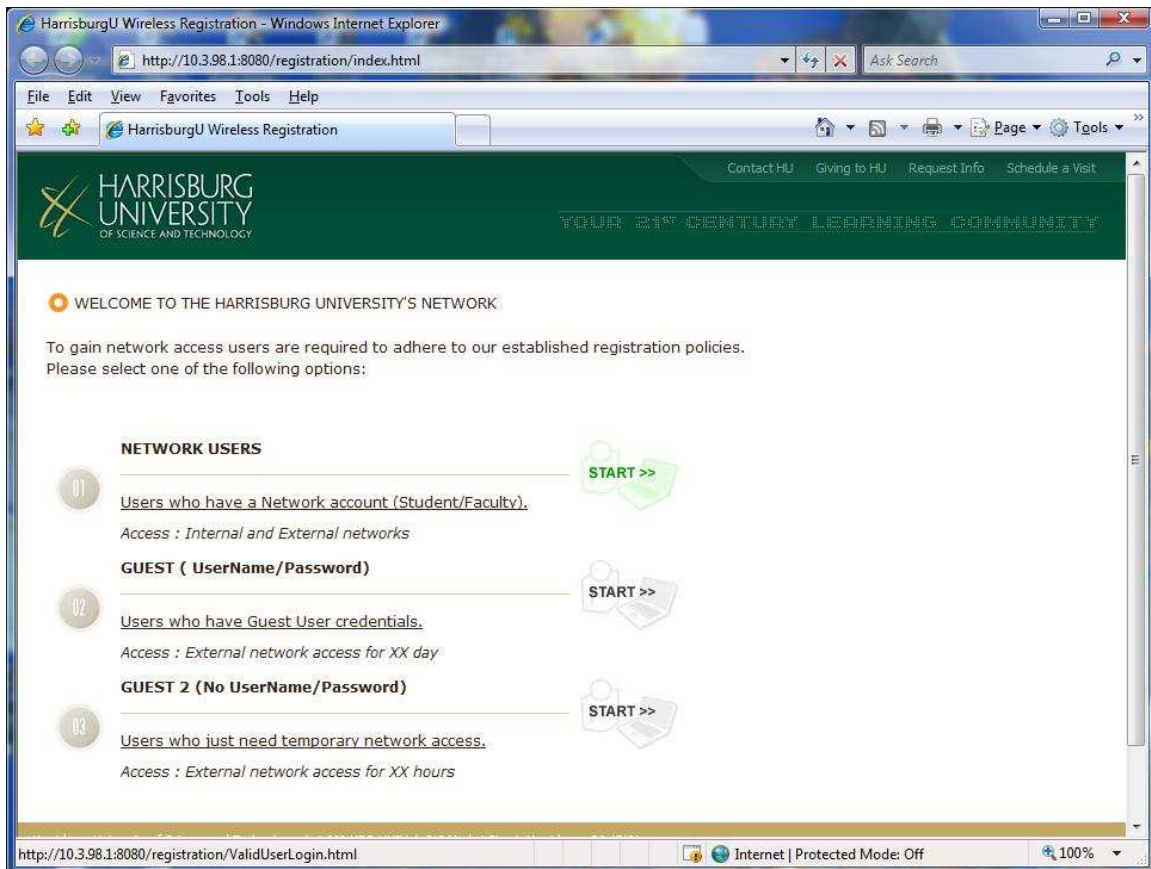
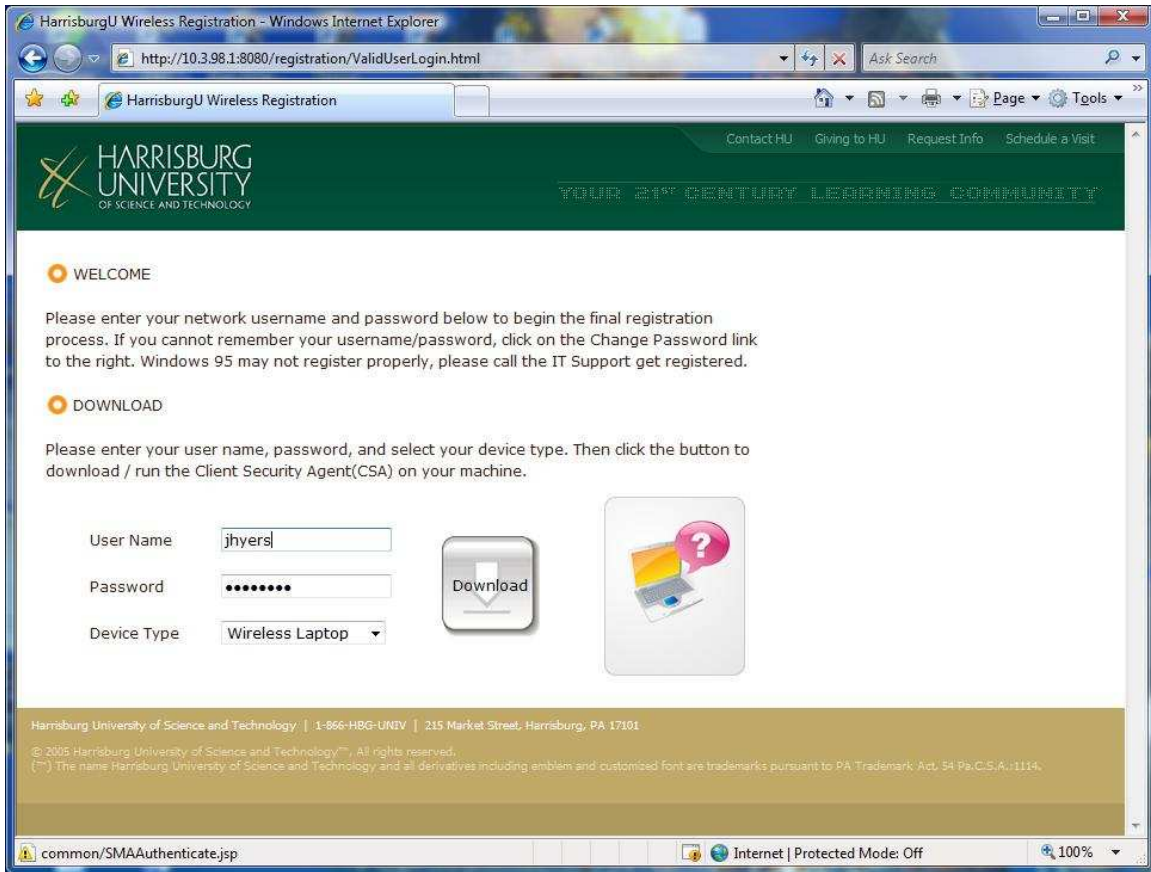


Connecting to the Network

- Connect to “HU-Student”
 - Then bring up your internet browser and you should be automatically directed to this page.



- Next click on “START >>” that is next to Network Users
 - A screen to log in will appear, use your network/moodle login and password and select wireless laptop for device type then click on Download



- Next you will be asked to “Run,” “Save,” or “Cancel” a download. Choose “Run.”



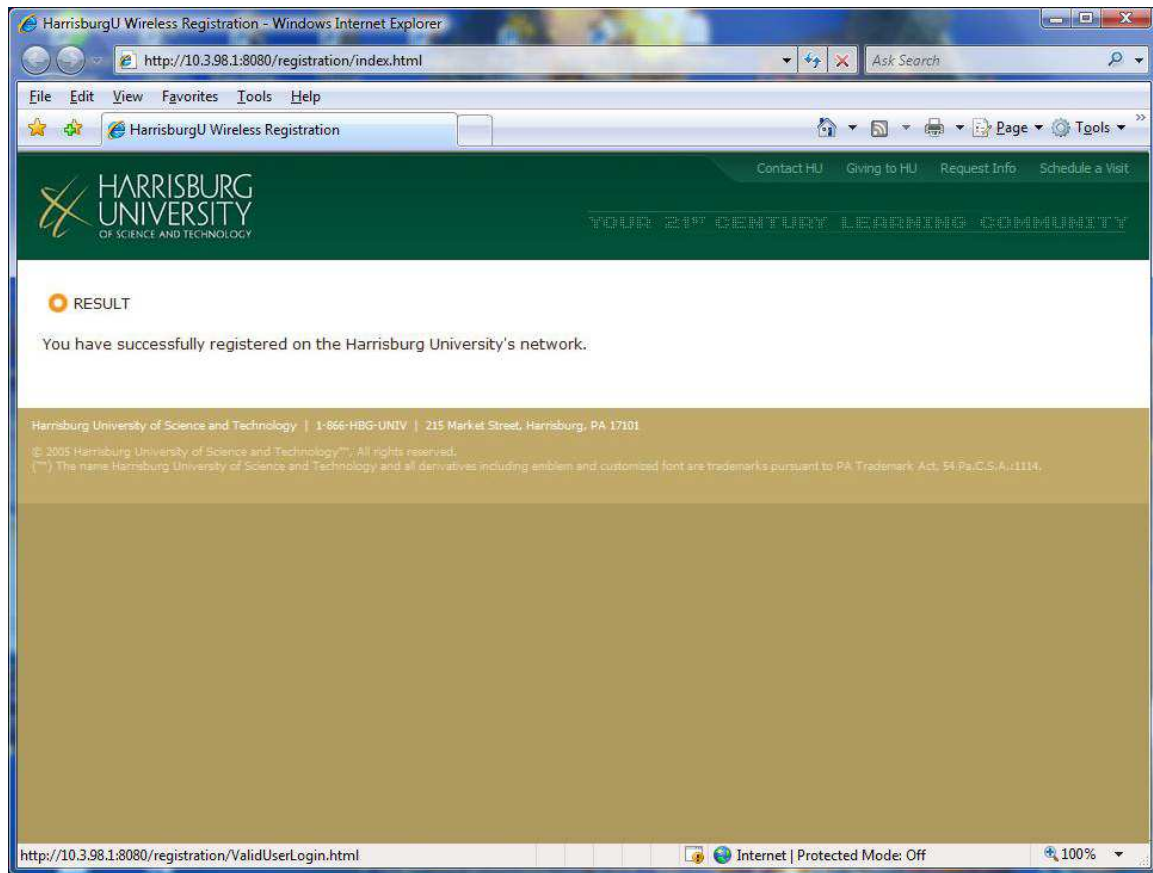
- You may receive a security warning asking to either “Run” or “Don’t Run,” Choose “Run.”



- A Bradford progress bar will proceed to load, this is the network checking to make sure you have Anti-Virus and Spyware software installed, and have current definitions. This may take a few moments.



- Once it has completed and it is successful, a browser window should pop up saying you have successfully registered to Harrisburg University's network.



- If you complete the above process and the system informs you that your computer has failed, it should provide an explanation of the reason for failing along with links to download the appropriate software to remedy your issue.
- If you are not automatically connected, you may need to briefly disable your wireless card and re-enable it to establish a new DHCP lease.